



kaṇasu

— A hosa story begins



EVERY DREAM BEGINS WITH A BLANK CANVAS.

This one begins with land.



A Project by

ESD

EVANTHA SRI DURGA

“Kanasu” means to dream.
And dreams deserve room
to breathe.

To stretch. To grow. To become.



82 exclusive plots set in the
peaceful expanse of Mysore.



We hand you more than land, we offer you authorship.

The chance to write your family's story on fresh pages, where every
foundation stone becomes a cornerstone of your legacy.

Dreams don't wait. They take root.

Under wide skies and along tree-lined avenues, the blueprint of a life begins - one that balances
nature and neighbourhood, privacy and belonging, stillness and opportunity.

It's a setting that lets life unfold with ease and intention.



Imagine waking up each morning in a home that you've designed from the ground up,
where every corner reflects your vision, every room tells your story.

This is more than real estate, this is where your tomorrow takes shape today.

❖ Lifestyle Amenities

Thoughtfully planned parks, **tree-lined avenues**, and **curated green pockets** create a natural rhythm through the community, offering spaces to pause, breathe, and reconnect.

This is open space reimagined.



KANASU ISN'T JUST
AN ADDRESS.

IT'S A SPACE TO BELONG



These spaces aren't ornamental - they're intentional.

Kanasu has been shaped around how people truly live. **Underground utilities, generous setbacks, and a clear, well-resolved layout** work together beneath the surface, creating a setting that feels calm and ordered.

Whether it's morning walks, evening conversations, or weekend playtime, life at Kanasu unfolds outdoors - the way it was always meant to be.

Crafted for Comfort, Community, and Well-being.



Free-flow outdoor activity spaces



Shaded gazebos within green pockets



Dedicated children's play zones



Walking paths



Sports areas



Spaces for seniors



Landscaped open areas



Wide concrete roads



❖ Masterplan

Kanasu is a carefully orchestrated rhythm of land forming a space that's structured yet soulful.

- **82 Luxury Plots**
- Wide, **tree-lined** internal roads
- Thoughtfully designed community
- **Underground utilities & smart infrastructure**
- Parks dotted across the layout for quiet pauses through the day

Each of our plots comes with a promise:

Clarity in ownership, harmony in design, and a future you can step into with confidence.

*Thoughtful, tidy, future-ready.
Just the way a dream should be.*



Legend:

- | | | |
|------------------------|------------------------|-----------------|
| 1. Main Driveway | 7. Stepped Seating | 13. Plaza |
| 2. Entrance Plaza | 8. Practice Basketball | 14. Sculpture |
| 3. Lawn | 9. Pergola Seating | 15. Seating Pod |
| 4. Kids Play Area | 10. Outdoor Gym | 16. Services |
| 5. Seating Plaza Court | 11. Kids Play Area | |
| 6. Gazebo | 12. Butterfly Garden | |

❖ Location

Poised for Today's Comfort and Tomorrow's Value.

Kanasu is positioned just off **Bogadi Road**, ensuring shorter travel times, better accessibility to established **residential neighbourhoods, leading schools, hospitals** and other daily conveniences.

- 100 mtrs from the Proposed PRR
- 1 km from the Proposed Cricket Stadium
- 2.5 km from Vijaynagar 4th Stage
- 5.6 km from Outer Ring Road
- 15 Mins from JSS University
- 15 Mins from Saraswathipuram
- 18 mins from Hebbal Industrial Area
- 19 Mins from Infosys



Move Ahead. Live Ahead. Invest Ahead.



❖ Mysore

The soul of a city. The stillness of home.

Mysore is timeless. A city steeped in tradition, yet quietly modern. A city where heritage whispers through the breeze, even as progress picks up pace. Its tree-lined streets, temperate climate, and easy pace of life offer a rare balance between cultural richness and contemporary convenience.

Kanasu sits at the sweet spot, close to the city, far from the chaos.

- **Fast-emerging** as South India's real estate gem
- Excellent **connectivity to Bangalore** and nearby hubs
- **Clean air**, calm living and low population
- A smart choice for homes and **high-growth investments**



❖ Investment With Intention

Land is the one thing they aren't making more of.
Which is why smart investors hold it.
And the wise build on it.

As Mysuru expands and the world looks towards new horizons, Kanasu remains a rare invitation: to build something permanent in a world that rarely pauses, to own a place that grows in value and meaning, season after season, generation after generation. Because some decisions shape wealth - but a few shape legacy.

And Kanasu is built for both.

It is more than a plotted development. It's a vision made tangible.



It's not just a smart investment.

It's a soulful one.

Whether you're planning to **build your dream home**, hold for appreciation, or create a legacy asset for the next generation, Kanasu offers you the kind of ownership that feels as good as it performs.



❖ Why Choose Kanasu



Beautifully connected

Close to schools, hospitals, work hubs & everyday essentials.



Concrete internal roads

Built for endurance, strength & smooth drives.



Future-ready access

With the upcoming PRR linking key growth corridors.



Thoughtfully planned community

With wide roads and a well-designed neighbourhood for better living.



Next to tomorrow's landmark

Close to the proposed international sports stadium.



Wellness outdoors

Walking trails, gazebos and meditation pockets.



A smart investment

Growing with development & infrastructure momentum.



Spaces for all ages

Elder-friendly seating & open play lawns for children.



❖ About ESD

With over 25 projects across Bengaluru's prime localities like Jayanagar, Basavanagudi, Koramangala, Indiranagar, Palace Orchards, and beyond, we are **redefining residential and commercial spaces**.

5 million sq. ft. of thoughtfully crafted spaces, now home to **2,000+** happy families.

ESD has carved a distinguished path in real estate, inspired by a **legacy** spanning nearly **five decades**. It has redefined homes, elevating spaces beyond structures into sanctuaries where life's most treasured moments are crafted and celebrated.



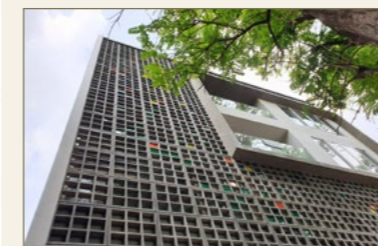
When you dream with the right people, it shows.



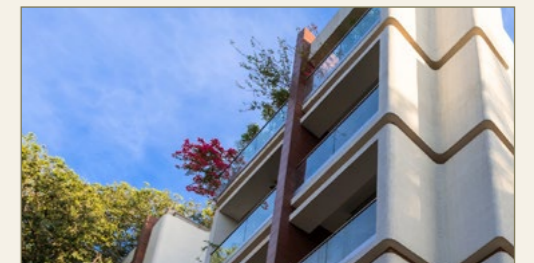
Twilight, Koramangala



Weave, Frazer Town



Earthen Ambience, Sarjapur



Where dreams stop being imagined
and start being built.

CONTACT US

 **+91 9980083876**

SITE LOCATION

No. 52, K Hemmanahalli Village,
Ilavala Hobli, Mysore - 571130

PRM/KA/RERA/1268/378/PR/051125/008224

Developed by

ESD EVANTHA
SRI DURGA

Marketed by

 **ATHARVA**
REALTY & CO

826, 2nd Floor, Above LG Showroom, Akshay Bhandar, Kuvempunagar, Mysuru - 570 023

DISCLAIMER-

The information herein i.e. specifications, designs and dimensions etc. are subject to change without notification as may be required by the relevant authorities or the developer's architect & cannot form part of an offering or contract. Whilst every care is taken in providing this information, the developer cannot be held liable for variations. The Company does not warrant that the information contained within this document is correct. All illustrations and pictures are artist's impressions only. The items indicated in the brochure are subject to variations, modifications and substitutions as may be recommended by the company's architect and/or the relevant approving authorities. E & OE